



**PROVIDING QUALITY EQUIPMENT FOR YOUR SAFETY**

# HYPRES

**E Q U I P M E N T**

**HIGH PRESSURE COMPRESSORS AND BREATHING AIR SYSTEMS**



**MADE IN THE USA**



#### VERTICAL COMPRESSOR

The HYPRES Series compressor is an enclosed vertical frame covered with a zinc rich primer & powder coat finish. The compressor features a "Made in America" North American three or four stage pump, producing 9 to 18 cfm at 5,000 or 6,000 psi. All systems are complete with auto condensate drain, purification system, full gauge panel and electronic control with Siemens Logo!™ smart relay.



#### CLASS 2 CONTAINMENT

The HYPRES Series includes a Class 2 Containment from Hypres Equipment. The Class 2 Containment has been independently tested by a third party engineering firm to comply with NFPA 1901 standards. Fill stations are available in single, dual, and three bottle configurations designed for the HYPRES Series. Oxygen containment fill stations are also available.



#### 4 PRODUCTS/1 UNIT

The HYPRES Series is an all-in-one unit consisting of a vertical enclosed compressor, Class 2 Containment, air management panel, and DOT or ASME air storage. The modular design allows for easy replacement of the fill station only in the event of a rupture.

MADE IN THE USA



#### AIR MANAGEMENT PANEL

The air management panel on the HYPRES Series is a complete system for air filling operation. The air panel comes complete with gauges and valves for all storage cylinders and fill positions. In addition there is an adjustable regulator (0-6,000 psi) with inlet and outlet pressure gauges. Remote fill port is standard.

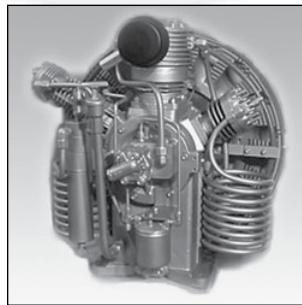


#### AIR STORAGE

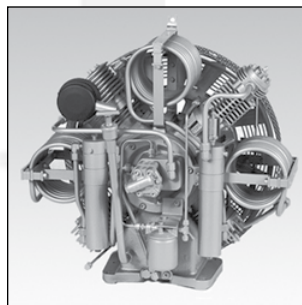
The air storage system on the HYPRES Series consists of either DOT or ASME cylinders. Storage cylinders are plumbed directly to the air management panel. Air storage is available in two, three, and four cylinder configurations.



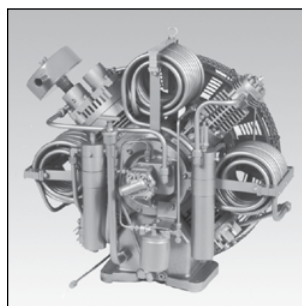
7608 Melrose Lane, Oklahoma City, OK 73127  
Toll Free 888-317-6445 Fax: 405-440-2471  
[www.hypresequip.com](http://www.hypresequip.com)



**NA9**  
North American Compressor block: three stage design for compression from 6 to 9 scfm at 5,000 psi.



**NA12**  
North American Compressor block: four stage radial design for compression from 10 to 12 scfm at 5,000 to 6,000 psi.



**NA18**  
North American Compressor block: four stage radial design for compression from 14 to 18 scfm at 5,000 to 6,000 psi.

**STATE-OF-THE-ART DESIGN**

- Three and four-stage designs for low vibration and balanced rod loads.
- Strong two-piece crankshaft for superior durability.
- Heavy duty, crankshaft-driven, gear type oil pump with high capacity spin-on oil filter provides generous lubrication to critical wear areas for longer pump life.
- Interstage coolers, aftercooler, finned cylinders, finned aluminum heads; fan-bladed flywheel allows cooler operating and discharge temperatures.



**BREATHING AIR COMPRESSOR**

Hypres Equipment's high pressure breathing air compressors are available in a Standard Open Horizontal or Standard Vertical enclosed frame. The Standard Systems are equipped with a magnetic starter and overload protector with a 24 VAC Siemens Logo!™ smart relay. Systems are available in single or three phase electric motors. Gas and diesel driven engines are also available.

**Standard Features:**

- Gauge panel:
  - Hour meter
  - Oil pressure gauge and gauges for each stage of compression
  - High temperature, low oil pressure, and power lights
  - Guarded On/Off switch

- Zinc rich powder coat for durability
- High pressure shutdown and auto on switch
- High temperature and low oil pressure shutdown switch
- Relief valves on each stage of compression
- Auto condensate drain system
- Purification system

**\* Systems are also available in an Economy Open Horizontal frame with minimum standard features.**

MADE IN THE USA

**PURIFICATION**

Hypres Equipment equips all compressors with purification systems which produce Grade "E" air. Each purification system is a replaceable cartridge type purification system. The systems come standard with a See-View indicator. The See-View indicator gives a visual of CO and moisture level indication in the air supply. Purification systems are available with capacities of up to 120,000 SCF of air treated between cartridge changes. Electronic cartridge monitors are also available upon request.



**AUTO CONDENSATE DRAIN SYSTEM**

All compressor systems from Hypres Equipment come standard with an Auto Condensate Drain System. These systems have a dual 3-way valve and solenoid for low pressure release discharge of condensate. System automatically eliminates condensate buildup every 15 minutes and at shut down. Condensate drain reservoirs are available upon request.



**MONITORS**

Hypres Equipment offers both carbon monoxide and/or moisture monitors for its compressor systems. Electronic monitors allow you to detect the presence of CO or moisture in the air supply. Each monitor is equipped with a reliable electrochemical sensor that accurately indicates the level of CO or moisture on an illuminated liquid crystal display. Contact Hypres for additional information.





**HPE4500-2**

The dual fill station comes standard with a fill gauge and fill valve for each fill position. Unit can be station or truck mount. A safety interlocking system requires the locking bar to be in the down and locked position before filling. Unit is also available in 3-bottle fill position.



**HPE4500-2-AIR PANEL**

Air panels can be mounted to any fill station. The air panel is equipped with a gauge and valve for each fill position and air storage cylinders. Adjustable regulator 0-6,000 PSI is standard. Cascade or bulk style panels can be configured. Panels are available in stainless steel or zinc rich powder coat. Remote Fill, Cascade Refill, and Low Pressure Air Tool System are a few of the many options for the air management panel.



**HPE6000-2**

The HPE6000-2 is a dual fill station with a complete air management panel. The air panel is equipped with a gauge and valve for each fill position and air storage cylinders. Adjustable regulator 0-6,000 PSI is standard. Bulk panels are also available. Remote Fill, Cascade Refill, and Low Pressure Air Tool System are a few of the many options for the air management panel.



**CLASS 2 CONTAINMENTS**

The construction of the Class 2 Containment consists of 1/4" steel plate in the drawer and 1/4" in the cabinet. This allows for 1/2" steel plate protection throughout the containment unit. The Class 2 Containments

are finished with a zinc rich primer and powder coat finish for maximum protection and durability. All units have been independently tested by a third party engineering firm to comply with NFPA 1901 standards.

**HPE4550-1-OCL2**

Fill stations are also available for oxygen applications. All components for the Oxygen Class 2 Containments are oxygen clean.



**HPE4550-2-OCL2**

Oxygen units are available in single, dual, and triple fill positions. Air panels are also available for oxygen applications.



**HPE4600-3-A/O-CL2**

The HPE4600-3-A/O-CL2 provides the ability to fill one Oxygen cylinder and two SCBA or SCUBA cylinders at once. Unit is also available for two oxygen and one SCBA or SCUBA cylinder.





**ASME AIR STORAGE**

Storage systems are available in ASME 5,000 & 6,000 PSI pressures. Mounting racks can be configured for horizontal or vertical mounting.



7608 Melrose Lane, Oklahoma City, OK 73127  
 Toll Free 888-317-6445 Fax: 405-440-2471  
[www.hypresequip.com](http://www.hypresequip.com)



**MOBILE BREATHING AIR SYSTEM DESIGNED TO MOUNT IN A 1 TON PICKUP TRUCK**

**Features:**

- Class 2 Containment NFPA 1901 compliant
- 90° door opening
- Six DOT Air Storage Cylinders
- Stainless Steel Air Management Panel
- Inlet/Outlet gauges
- Adjustable Regulator 0-6,000 PSI

- Gauge and valve for all air storage cylinders
- Fill Gauge and Valve
- Cascade Refill
- Mounted on common frame

**Options:**

- Four DOT Air Storage Bottles
- ASME cylinders
- Air panel illumination
- Low Pressure Air Tool System



**DOT AIR STORAGE**

Storage systems are available in DOT 4,500, 5,000 & 6,000 PSI pressures. Mounting racks can be configured for horizontal or vertical mounting.



**MOBILE SLIDE-IN AIR STORAGE**

Horizontal racks with air panels are just one of Hypres' custom configurations. The system comes standard with complete air panel and 4 DOT or ASME Air Storage cylinders.



**CLASS 2 CONTAINMENT**

Class 2 Containments are available in single, dual, and triple fill positions for trailer systems. Complete air management panels are available for air storage cylinders. Panels can be mounted on containment or in a remote location.



**AIR STORAGE**

Air storage is offered in DOT 4,500, 5,000, 6,000 and ASME 5,000 & 6,000. Horizontal and vertical racks can be purchased for storing cylinders.



**BREATHING AIR TRAILER**

Hypres Equipment can custom design your breathing air trailer with all the amenities you require. Standard breathing air trailers are built with a Hypres horizontal gas or diesel driven open frame compressor,

custom exhaust, dual Class 2 Containment, complete air management panel, (4) DOT 6,000 PSI air storage bottles mounted on a vertical rack. Contact Hypres Equipment for your custom configuration.



**COMPRESSOR**

Horizontal open frame compressor driven by either a gas or diesel engine. Systems provide 9 to 18 CFM at 5,000 or 6,000 PSI.

**OPTIONS**

Breathing air trailers are available with many options such as SCBA Storage Rack, hose reels, generators, lights and much more. Contact Hypres Equipment for details.



MADE IN THE USA

H



Hypres Equipment manufactures American made high pressure breathing air Compressors, Class 2 Containments, Air Management Panels, and DOT & ASME Air Storage Systems. The product line is capable of serving the fire, industrial, military, and SCUBA markets.

Visit [hypresequip.com](http://hypresequip.com) for details and specifications for our complete product line. [Hypresequip.com](http://hypresequip.com) offers product brochures, industry news, online parts purchasing and much more information regarding Hypres Equipment.



**check out [hypresequip.com](http://hypresequip.com)**

**7608 Melrose Lane, Oklahoma City, OK 73127**  
**Toll Free 888-317-6445 Fax: 405-440-2471**  
**[www.hypresequip.com](http://www.hypresequip.com)**



7608 Melrose Lane  
Oklahoma City, OK 73127

